

PM Standard Type Motor

SP-35RF(LONG)



APPLICATION

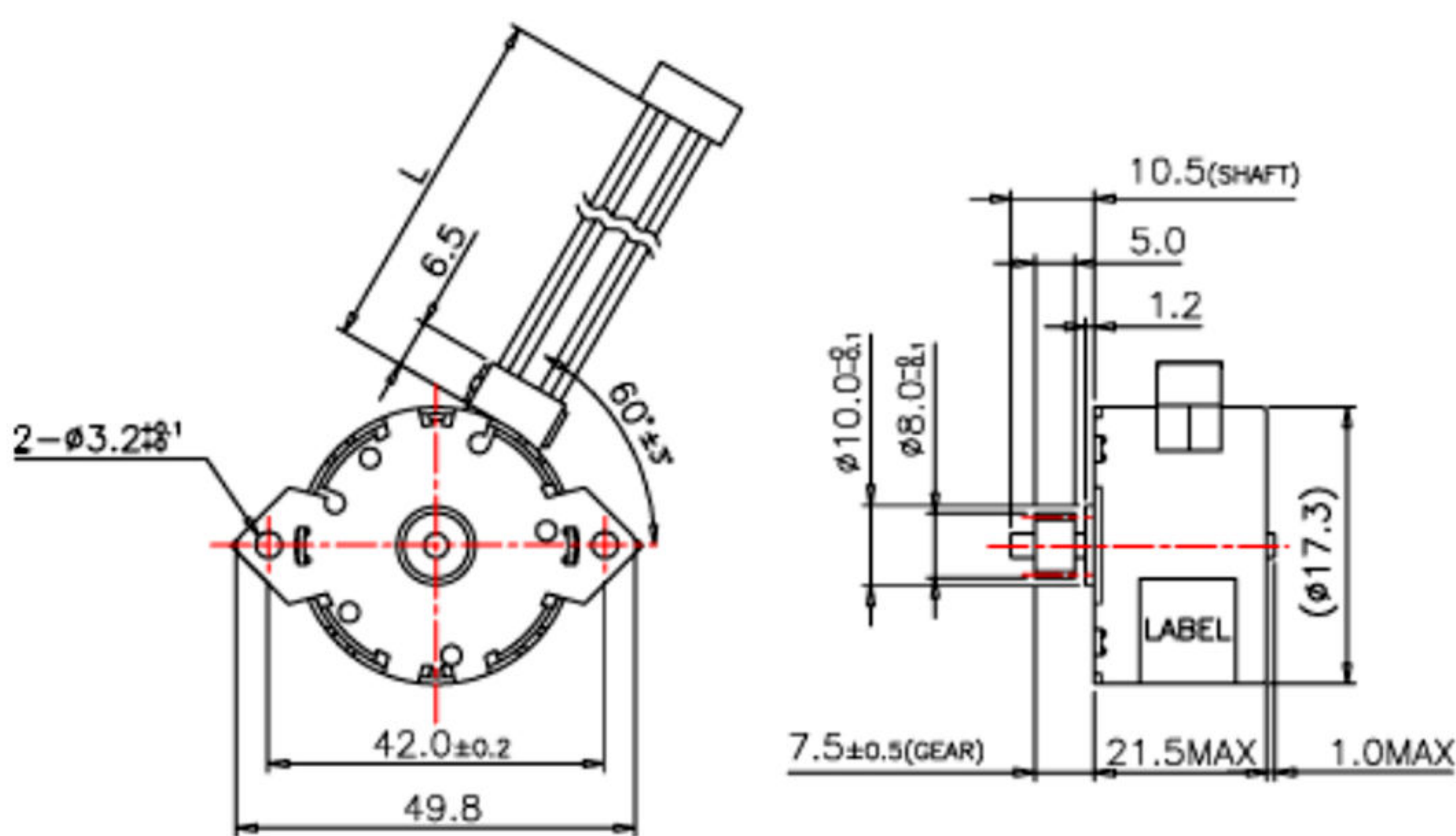
- Mini Printer

SPECIFICATION

Series	Step angle	Volt	Phase	Resistance	Drive Mode	Max Starting Pulse Rate(PPS)	Max Slewing Pulse Rate(PPS)
	degree	VDC		$\Omega \pm 7\%$			
050KA	7.5	24	1-2	40	Unipolar	900	2060
070KA	7.5	15	2	60	Unipolar	480	580
080KA	7.5	15	2	35	Unipolar	520	700

Holding	Torque(gf.cm)		Pinion Spec			(FPC)	Drive Method
	Pull in 200PPS	Pull out 200PPS	Module	PCD	Z	L(mm)	
550	250(500PPS)	280(500PPS)	0.5	$\Phi 10$	20	200	Constant Voltage
280	185(200PPS)	113(500PPS)	0.5	$\Phi 6.0$	12	460	Constant Voltage
300	215(145PPS)	140(400PPS)	0.4	$\Phi 7.2$	18	670	Constant Voltage

DIMENSION



CHARACTERISTICS

